



GainCloud Systems

GainCloud Service
Android Configuration Guide

Version: 1.0 (Released: July 07, 2011)

Version: 1.1 (Released: Nov 05, 2012)



© 2012 GainCloud Systems - All rights reserved.

GainCloud Service is a registered trademark of GainCloud Systems LLC. All GainCloud product names and logos are trademarks or registered trademarks of GainCloud Systems LLC. in the United States. All other company and product names and logos are trademarks or registered trademarks of their respective owners in certain countries.

The information in this document is subject to change as GainCloud reserves the right to, without notice, make changes to its products as progress in engineering or manufacturing methods or circumstances may warrant. A Service License may be required.

Table of Contents

1	INTRODUCTION.....	2
2	ANDROID CONFIGURATION.....	3
2.1	New Mailbox Setup.....	4
2.2	Email Settings Confirmation.....	12

Chapter 1

1 Introduction

This document provides end user usage guidance and documentation related to the GainCloud Based Email-Service Setup for any Android Device (Mobile or Pad). The sections covered in this document are:

- a. Device Configuration – Setup and configuration for Android Mobile device is covered.

Chapter 2

2 Android Configuration

Before You Proceed – Please make sure you have registered at GainCloud Service for a Cloud-hosted email mailbox. **Cloud Service registration is required before your start configuring your Android device.** We have included illustrations (or screen-shots) of respective Android pages in this User-Guide as examples – but these screen’s vary on different Android Device Models.

If you are looking for a specific feature (or documentation) which is currently not covered in this document, then please feel free to let us know at support@gaincloud.com.

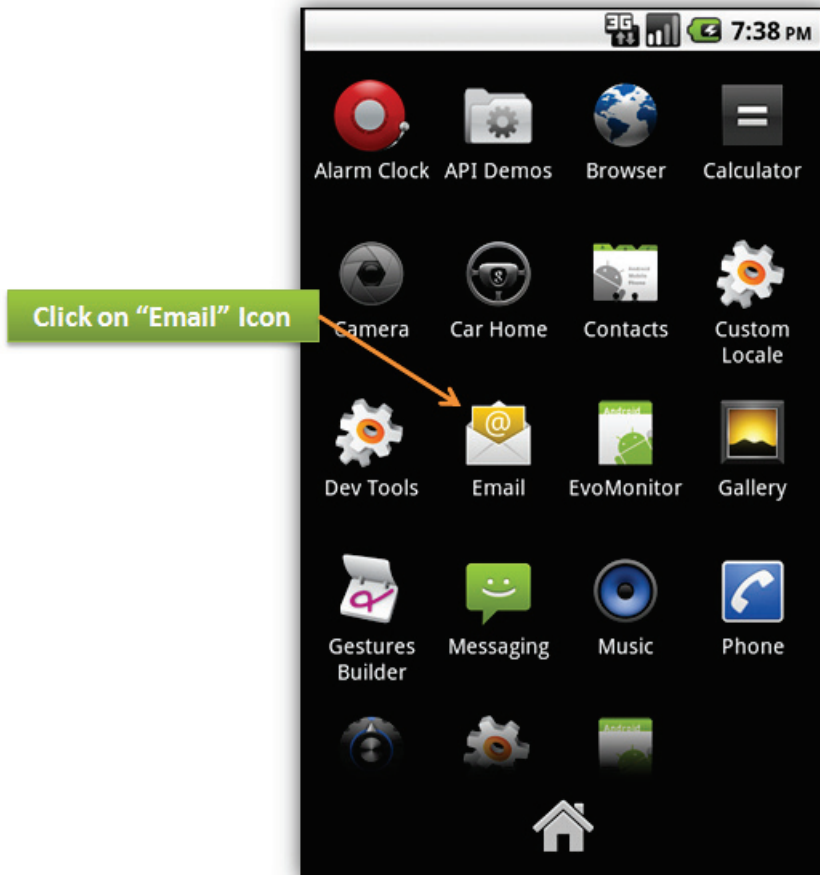
2.1 New Mailbox Setup

Please follow the steps given below to configure your GainCloud Email to your Android Device.

1. Unlock your Android Device and Click on the Main Menu Entry on your Home-Screen.



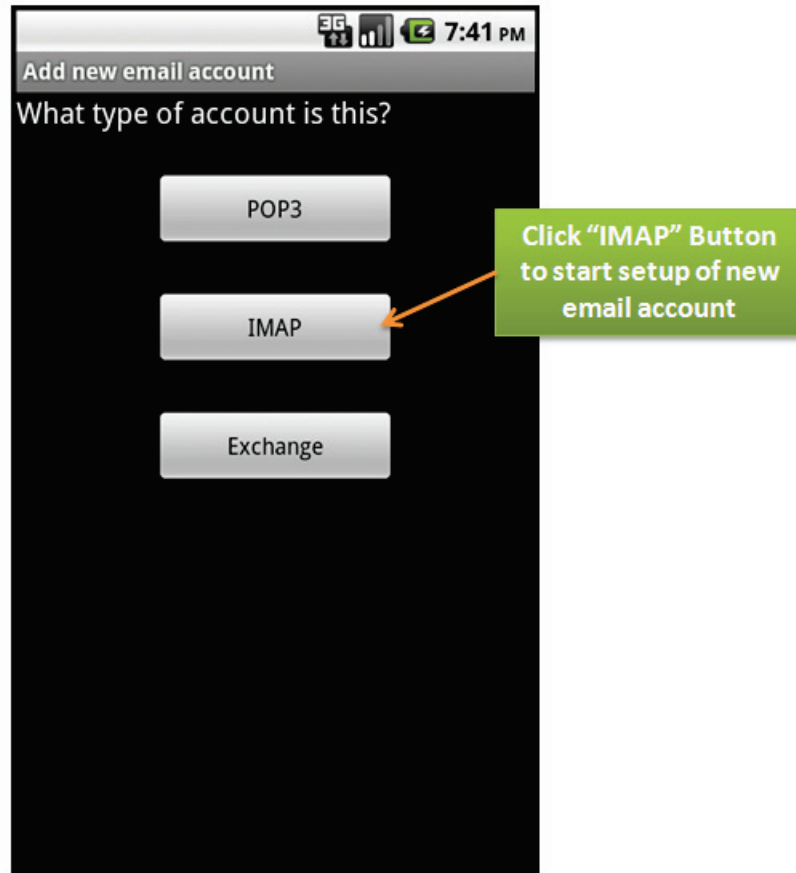
2. From Android main menu, click on the "Email" Icon as shown in the illustration below



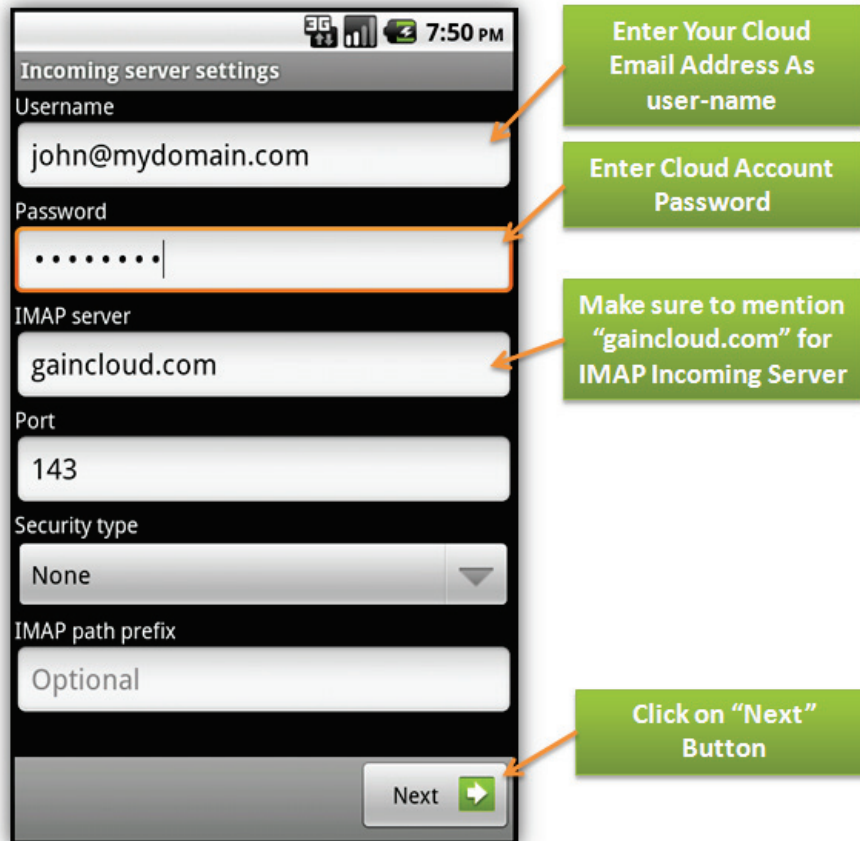
3. The new email setup application should appear.
4. Make sure to enter your full email address as user name and your cloud account password. Then click on “Manual Setup” button to continue to enter additional configuration parameters.



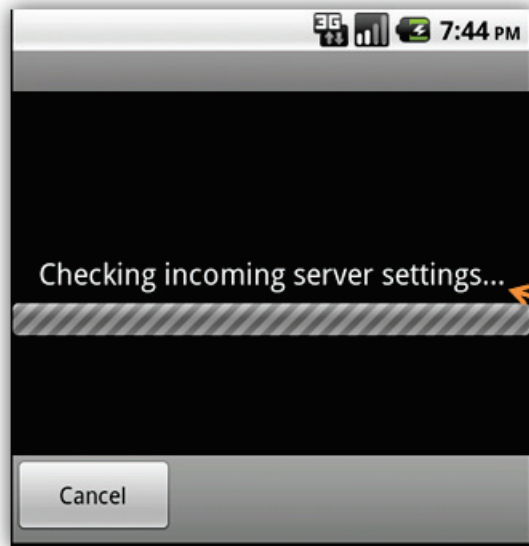
5. Android email configuration should prompt you for the email account type. Click the "IMAP" button. You are selecting "Internet Mail Access Protocol (IMAP)" because it allows for efficient fetch of emails along with email folders (and subfolders).



6. When Incoming Server Settings section appear, use the following information to fill-in the data entries as shown in the illustration below.
7. Enter your full email address as “Username”, your cloud account password and the incoming IMAP Server is “gaincloud.com”.
8. The incoming IMAP Server port should be “143”. Select “None” for security type and leave IMAP Prefix setting empty. Then click on “Next” button.



9. The Android Email system will verify all the Incoming IMAP Server entries and display a message window as illustrated below. This window should disappear automatically and the next “outgoing configuration window” should appear next.

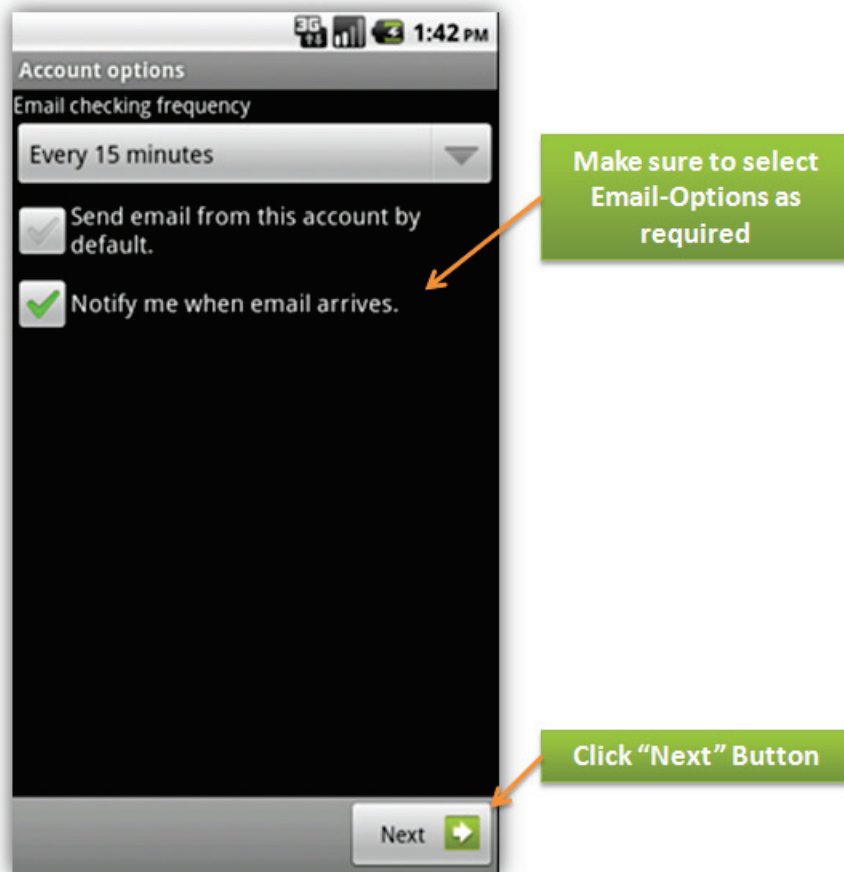


Android Email
Verification would
verify your email
credentials
automatically

10. The Android email system should load the “Outgoing Server Settings” window.
11. Then SMTP Server as “gaincloud.com”.
12. You can use a non-standard outgoing port number 587 or standard SMTP port number 25. Some email systems recommend using non-standard SMTP port like 587 since it may help reduce spam. Your cloud email system supports both types of outgoing SMTP ports for supporting sending emails.
13. Make sure to enter your full email address as “Username” and your cloud account password.
14. As a security measure, your outgoing emails requires authentication using your cloud account, thus make sure to enable the checkbox next to “Require Sign-in”.
15. Then click “Next” button.



16. Once the entire configuration is verified, Android Email system should display “Account Options” window as illustrated below. If you have multiple email accounts configured on your Android device, then you can select this currently configured email account as a “default” for sending emails. Similarly you can also select options to notify you as a ring-notification on your mobile device, when a new email message arrives.
17. The most important setting is the “Email checking frequency” which enables Android Email system to synchronize/download emails every few minutes based on selected frequency-setting.
18. Then click on “Next” button.



2.2 Email Settings Confirmation

Once Your Mailbox is successfully configured with Android Email system should display a confirmation message as “Your account is set up, and email is on its way!” This confirms that all your email settings are configured properly. Click on “Done” button to conclude Android Email configuration.



Note: Remember that the initial Confirmation Email can take 10 to 15 minutes to appear. Once the confirmation email is received, the Android Mobile Device will initiate an “auto-sync” process (in the background). Your Android mobile device is now ready to start sending outgoing emails right away; and you should start receiving emails within the next 20 minutes.